



General Catalogue

Industrial doors & loading bay equipment



Quality since 1967
Reliable Doors & Docks

www.angelmir.com



Why Angel Mir?

- More than 50 years of **experience**.
- 100% European **manufacturing**.
- Supply and installation worldwide.
- Continuous **innovation** to meet the new requirements of the market.
- **Specific products** for the industry: food (cold, environment), pharmaceutical, corrosive environments, logistics, etc.
- Doors and ramps checked and **tested** before delivery; guarantee of performance.
- High level quality parts that meet the strictest controls. Always **top brands**.
- After-sales service with spare parts permanently in stock.
- The **widest range** of doors and logistic equipment in the country.
- Three production centres of more than 22,000 m2 including a **training centre** and a **showroom** of 2000m2 for the customers.



EXPORTING OVER 50 COUNTRIES SINCE 1967

www.angelmir.com

The technical data and measurements shown in the catalogue are merely for guidance. For manufacturing data please contact our technical department. Angel Mir products are manufactured tailor-made for each client. They are products made by the unit and not in series. All rights reserved.

Constantly advancing and improving our products, ANGEL MIR reserves the right to modify models and features without prior notice. The technical data in this catalogue is published only for informative purposes, without this representing any commitment on the part of ANGEL MIR.

No part of this catalogue may be reproduced, recorded on any kind of storage system or transmitted in any way by any procedure, whether it be electronic, mechanical, reprographic, magnetic or other means, without prior written authorisation from ANGEL MIR.

The passion for the work well done, is the key of the Angel Mir growth.

For 50 years, we have manufactured industrial doors and solutions for logistics. We are present in more than 50 countries, developing doors for specific applications that are a reference in the international market.

Our exclusive and original patented systems are originated in our commitment to meet the needs of our customers to the smallest detail. Our equipment is designed to solve functional, safety, technical and aesthetic circumstances.

At Angel Mir, our range of equipment is unique because our goal is customer satisfaction; therefore, we advise and design each product according to the needs of each application and we take care of its installation. We also offer an after-sales service for maintenance and repair throughout the product's lifetime.

Ángel Mir
President

La Bisbal
BARCELONA



www.angelmir.com



Angel Mir factories with over 42.000 m²



Quality since 1967

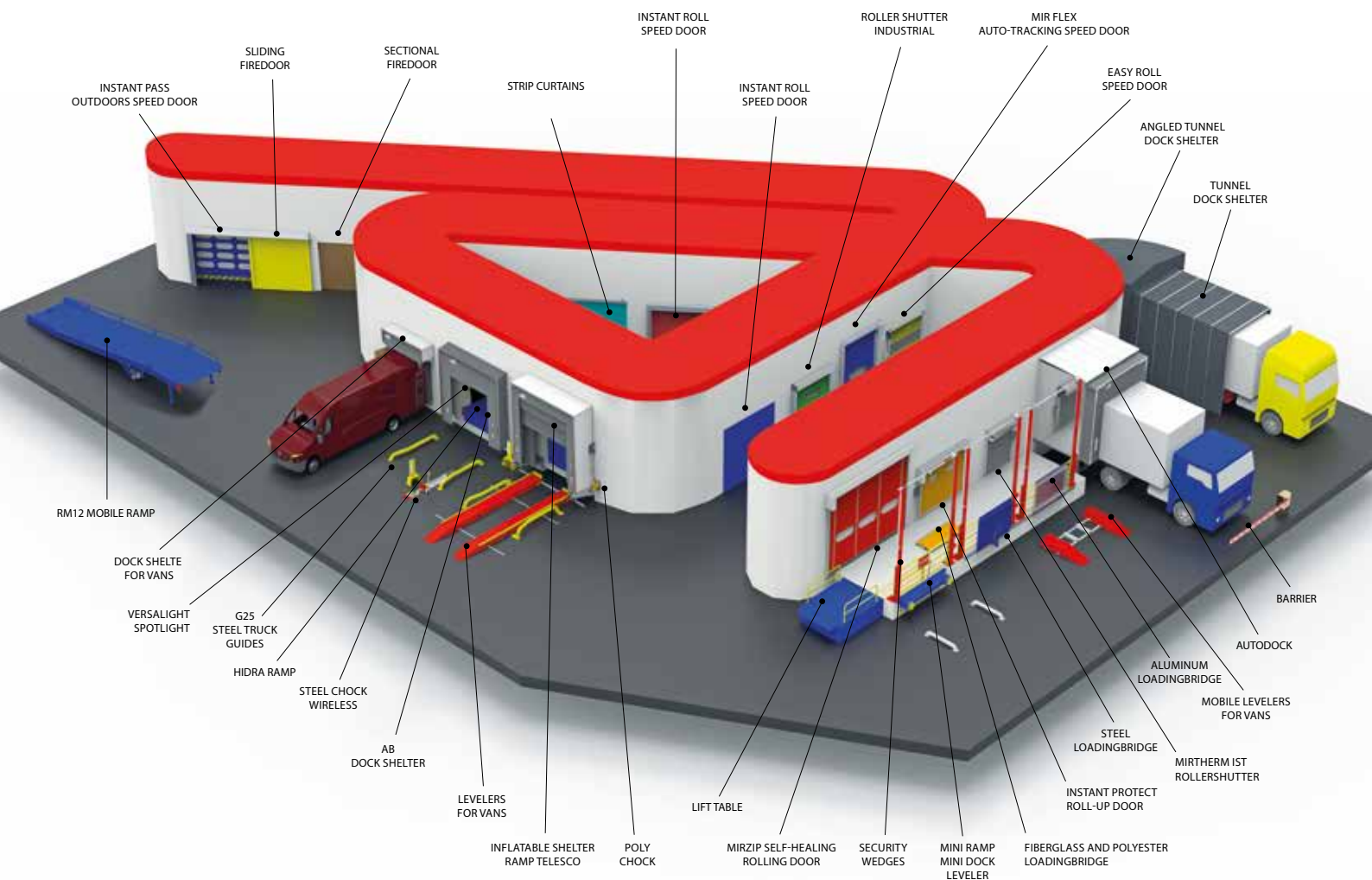
Reliable Doors & Docks

Energy efficiency

Some products of **Angel Mir**® have been designed to provide significant energy efficiency and reducing consumption of resources. With our experience, we support and help our customers to carry out the projects with maximum energy savings through the most appropriate choice of our products. Also, depending on the sector, we recommend the most durable and suitable equipment for each application.

Raw Materials

For almost 50 years, **Angel Mir**® has always counted on local and European suppliers that provide the best raw materials, in order to achieve the best performance of its loading bay equipment and durability.



Quality since 1967
Reliable Doors & Docks

INDEX

INDUSTRIAL DOORS	5
Speed doors	5
Fire resistant doors	9
Sectional doors	10
Roller shutters	12
Aluminium / Steel roller shutters	13
Composting doors	14
LOADING BAYS	15
Dock levellers	15
Docks shelters, bumpers and posts	17
Security systems	20
Lifting tables	24
OTHER SOLUTIONS	25
to load & unload	25



INSTANT PASS

Door designed to be assembled outside and against the inclement weather. Canvas equipped with transversal reinforcement tubes that provide the necessary resistance to significant wind pressures. Ideal door model for industrial environments, car dealers, warehouses, automatic car wash ... PVC canvas curtain 950 grs / m². Optionally photocell barrier system.

Optional Inox AISI-304 / 316. Optional applications ATEX (Explosive Atmospheres), according to Certification by official laboratory.

Maximum area: 80 m²

Maximum dimensions: 9,000 x 7,000 mm



INSTANT PASS PREMIUM The fastest stackable door

It increases the performance of the door Instant Pass with the following features: Rising speed up to 1.8 m / second, with deceleration before the upper stop. Anti-noise and sealed joints in the vertical jambs. As they are made of PVC and polyurethane foam, they reduce the noise produced by the movements of the canvas and improve the lateral sealing. Control panel with frequency variator and ABS box with transparent cover. Passage safety. Includes photocell barrier system.

Maximum dimensions: 5,000 x 5,000 mm.



INSTANT PASS BASIC - OPTION MODEL ECO

Speed stackable door with self-supporting structure in galvanized steel. Canvas equipped with transverse reinforcements of composite flexible tubes, which provides the necessary resistance to wind pressures. This model of door easily adapts to all types of opening. PVC canvas curtain 950 grs / m². Optionally photocell barrier system. Optional Inox AISI-304 / 316.

Maximum dimensions INSTANT Pass Basic: 5,600 x 5,200 mm

Maximum dimensions Instant Pass Eco: 5,560 x 4,900 mm.



GRAND PASS

Door having a stackable system to close large openings or with strong wind pressures. This gate model is made up of a series of panels formed by double-walled canvas in laminated Trevira. Equipped with aluminium cross profiles, which provides high resistance to wind pressures. Polyester belts are responsible for drawing the aluminium profiles and moving the canvas. The rising mechanisms, motors, reducers, shaft transmissions, etc., are measured according to the size of the door.

Sizes and characteristics to be determined depending on the technical project



INSTANT PASS ISO Cold room (-25°C)

Vertical rising speed door designed for cold rooms. The structure of the Instant Pass ISO is made of stainless steel, a material that allows it to be installed in places where high hygiene is required, such as the food and agriculture sector. The canvas is made with a sandwich of plastic canvas on both sides and intermediate insulating foam. The jambs include special brushes for low temperature. In very low temperature applications heating resistances can be placed on feet and platform. The motor, the control panel and the electrical accessories have the appropriate IP for the environment.

Maximum dimensions: 4,000 x 4,000 mm. **Optional Inox AISI-316.**



INSTANT PASS ISO VL

With vertical lifting suitable to be used in cold stores having negative temperature until -25°.

Self-supporting structure in stainless steel AISI 304 with satin finishing. Rigid canvas is rigid like a panel and is made of sandwich whose two outer faces are PVC canvas and is filled with thermal insulating material. As its total thickness is 28 mm, the insulation is greater compared to the stackable version thanks to the vertical opening system.

Options: motor protection in stainless steel, heated motor protection, heated switchboard.

Maximum dimensions: 4,000 x 4,500 mm



INSTANT ROLL

Roll-up speed door intended to be installed indoors. Self-supporting structure in galvanized and painted steel sheet. The canvas is equipped with transverse reinforcements providing good resistance to air currents. Suitable for food industries, large areas, laboratories... PVC canvas curtain 950 grs / m². **Optional Inox AISI-304/316. Option:** emergency opening with spring system.

Optional applications ATEX (Explosive Atmospheres), according to Certification by official laboratory.

Maximum dimensions: 5,000 x 5,000 mm.



INSTANT ROLL ECO

Roll-up speed door intended to be installed indoors, not self-supporting structure, RAL 9002 lacquered steel sides. Canvas curtain of 950 grs / m² PVC, with sealing brushes on the side jambs. Recommended for passages between industrial units, supermarkets, workshops, warehouses, etc. **Optional:** Emergency opening system via UPS with single-phase panel. / Stainless steel structure AISI 304L and 316L. / Special for robotized areas (welding or handling) with safety micros for exact positioning and canvas with increased stiffness or high resistance to welding sparks.

Maximum dimensions: 4,500 x 4,500 mm.



INSTANT ROLL BASIC

Roll-up speed door for interior spaces having medium size and intensive use, such as production areas or warehouses. Suitable for light wind loads. Self-supporting structure of galvanized sheet and canvas with longitudinal reinforcements, which provide rigidity through a tubular profile made of composite materials, because it has an extraordinary resistance to breakage even in case of violent impacts, as well as great flexibility. Equipped with a frequency variator to control the speed of the rising and descent of the door, and a curtain of photocells throughout the width of the door and up to 2.5 meters high, which detects any object. **Option:** the finishing of the canvas is available in different RAL colours, lacquered structure in RAL colour.

Maximum dimensions: 3,300 x 3,500mm



HERMETIC ROLL for clean rooms

Roll-up speed door roll up door to fill small gaps. Designed to have low permeability to air and good resistance to air pressures, which makes it ideal to be installed in clean rooms with positive or negative pressure. Prevents dust accumulation. The upper hood is inclined to help the materials deposited on top of it to run off.

The canvas is made with PVC tarpaulin having high longitudinal flexibility and transverse stiffness. As longitudinal reinforcements are not necessary, the canvas is smooth without protrusions or edges. Standard colour: plain white PVC on both sides. Other colours with rough surface and FDA quality or antistatic fabric (grey only).

Option: Vision windows made of glass quality PVC of 2 mm thickness. Wind resistance according to EN 12424: class 1 / Air permeability according to EN 12426: class 2. Air loss A 30 Pa: Positive pressure less than $2 \text{ m}^3 / \text{H m}^2$ / Negative pressure less than $4 \text{ m}^3 / \text{H m}^2$.

Maximum dimensions: 2,900 x 3,500 mm.



HERMETIC BALL (for clean rooms)

NEW

Roll-up high-speed door for clean rooms provides high air tightness and a minimalist design to prevent the entry of air and any external contamination.

Air permeability (positive and negative pressure) with a pressure of 50 Pa (m3/m2h): Class 3. Resistance to water penetration with a pressure of 150 Pa (N/m2): Class 3

Aluminium structure having a reduced configuration. Guides include a double lip to increase the tightness of the door. Light PVC canvas that slides by means of a ball bearing mechanism inside the door guides. High flexibility in the rolling direction and high transversal rigidity. Curtain crossed photocell.

Hermetic Ball Basic: motor located on the side of the door.

Hermetic Ball Premium: motor integrated into the upper receptacle of the door together with the control panel, allowing to install the door levelled between walls and to reduce even more the door ensemble.

Maximum dimensions: 2,900 x 3,000 mm.



HERMETIC BALL® BASIC

HERMETIC BALL® PREMIUM



INSTANT PROTECT

Roll-up speed door for medium size gaps. It is intended to be used as a separator of robotic cells or accesses to machines. It is a gate resistant to moderate air currents and to slight impacts. The structure is designed for being integrated in demanding environments. The canvas is made with PVC tarpaulin having high longitudinal flexibility and transverse stiffness. Longitudinal reinforcements are not necessary although in case of higher demands, the canvas can be reinforced. Standard colour: orange PVC with rough linen surface, optionally it can be in other colours. Antistatic fabric (grey only). Vision windows made of glass quality PVC of 2 mm thickness. Integrated into the canvas itself. Possibility of red peepholes for welding areas. Includes photocell barrier system.

Maximum dimensions: 3,000 x 3,000 mm.



MIRFLEX Auto-tracking door

Roll-up speed door for medium size gaps, suitable to separate different environments and passages between industrial units, warehouses, shops or positive temperature rooms. Aluminium guides reinforced with white prelacquered galvanized steel sheet and with reduced size. Adjustable speed. It withstands moderate air currents. Canvas with flexible reinforcement system that leaves the guides when they receive a strong impact and go back on track when the door goes up. PVC canvas curtain 950 grs / m^2 . Includes photocells barrier system. **Optional applications**

ATEX zone2 (Explosive Atmospheres). Emergency opening with spring or UPS.

Maximum dimensions: 3.300 x 3.500 mm.



MIRFLEX ECO Auto-tracking door

Roll-up speed door for medium size gaps. The support and guides structure, in anodized aluminium or standard paint (white or grey RAL 7016), are very small and take up very little space of the light gap. It resists moderate air currents. Canvas with flexible reinforcement system that leave the guides when they receive a strong impact and go back on track when the door goes up. PVC canvas curtain 950 grs / m². Includes photocells barrier system.

Maximum dimensions: 3,300 x 3,500 mm.



MIRZIP Auto-tracking door

Speed door designed for medium size interior or exterior accesses. It withstands moderate wind loads. Suitable for intensive use. The canvas includes at its ends a zipper of plastic material that runs through polyethylene guides. In case of impact, the canvas leaves its guides and is automatically reintroduced. Long useful life. It has a frequency variator. Indoors assembly, simple and fast. Optionally a cover for the coiling box or PVC windows of glass quality can be added.

Maximum dimensions: 5,000 x 5,000



MIRZIP MARKET Auto-tracking door

Speed door for medium size interior accesses in warehouses or production rooms. It has an aesthetic and elegant design occupying minimal space on the sides. Totally anodized aluminium profiles with fixing, sealing and electrical installations hidden inside the feet. It incorporates a frequency inverter. The auto-tracking system allows the curtain to get back on track on its own if it receives an impact, thanks to a continuous guidance system without rigid elements. Includes photocell barrier system.

Options: emergency opening by counterweight, pushbuttons and emergency stop integrated at the foot of the door. Possibility to add safety signs or LED illuminated logos at the front and inside cover of the door's feet. Illumination of the entire contour of the door with LED light.

Maximum dimensions: 4,000 x 4,500 mm.



EASY ROLL ALU

Roll up speed door to replace the cumbersome slats curtains and the PVC swing doors. Light and small design with an external frame formed by two aluminium side guides having a white lacquered or silver anodized finishing. Low maintenance. Ideal for interior passages between industrial units, supermarkets or warehouses. Includes photocell barrier. **Option:** peepholes. **Maximum sizes:** 3,000 x 3,000 mm.

EASY ROLL INSECT

Manual speed door with pierced canvas curtain used as an insect barrier. Suitable for food production and food handling centres or places needing to avoid insects entering. Economic price. **Maximum dimensions:** 3,500 x 3,000 mm.



INSTANT PASS XXL

Large stackable speed door to divide interior spaces not suffering wind pressure. Upper platform to house the lifting shaft and the mechanism. Polyamide belt for lifting. It can include side guides. Ideal for sports halls, paint booths for large parts, separation of differentiated production areas, etc. **Custom built.**



Fire resistant SLIDING DOOR CORFIRE ONE SHEET from EI 60' to EI 180'

Doors made up of one or several sheets, they hang by an upper guide for horizontal movement of the latter by means of trolleys with protected bearings, and guided at the bottom by bearings. Automatic locking produced by a counterweight.

Sheet made by panels joined together by insulating joints. Approximately 1,200 mm wide panels, consisting of two thick galvanized steel sheets, and a chamber filled with a combination of thermal insulating materials inside, to prevent the passage of flames and gases. Finishing of the sheet white lacquered and the other profiles in galvanized steel, with option in stainless steel. They can be installed outdoors.

Maximum dimensions:

EI2-90 cat. B (tested on both sides): 5,390 x 4,280 mm.

EI2-120 cat. B (tested on both sides): 7,000 x 6,000 mm.

EI2-120 cat. B with passage door without socle (tested on both sides): 7,000 x 6,000 mm.

EI1-240 cat. B ((tested on one side): 7,000 x 6,000 mm.



Fire resistant SECTIONAL DOOR SECCFIRE 60'- 90'

Thanks to their design, they can remain open or operate as a normal sectional door both indoors and outdoors. It allows different types of lifting to be adapted to the available spaces.

The entire structure is covered by materials that prevent the exit of flames, fumes and gases and, at the same time, work as sealing joints for maximum tightness. Internal chamber composed of insulating composite with density 350 kg / m³ and thickness of 60 mm. Finishing of the sheet structure in smooth slat of galvanized steel painted in white, optionally in stainless steel 304 or 316.

They guarantee a minimum resistance of 60 or 90 minutes on both sides of the door depending on the model. Control panel connected to the fire alarm; when it receives the alarm signal, the door descends due to the movement of the motor.

Maximum dimensions: 4,000 x 4,000 mm.



Fire-resistant GUILLOTINE ONE SHEET DOOR from EI 60' to EI 120'

It is manufactured with a single sheet or, if there is not enough space, with two telescopic sheets. Ideal for small lintels. It remains open, until it receives the signal from the fire detection system and then descends by gravity and at a controlled speed.

Sheet formed by panels joined together by insulating joints. Each panel has an approximate width of 1,200 mm. The set has a perimeter labyrinth topped with selfexpanding intumescent joints that WILL swell with temperature and block the passage of flames and gases. Sheet finishing in galvanize steel or lacquered white. Option in stainless steel. Safety elements to prevent falls in case any element of the suspension breaks. Optionally, in doors higher than 2,400 mm, they can include a pedestrian passage.

Maximum dimensions:

1 Sheet: EI 60/ 90: 5,200 x 4,640 mm

Telescopic model: 3 sheets (T+F): EI 120': 5,445mm (width)x7,425 mm (height). Max surface: 40,36 m²



Fire resistant CURTAIN ROLLTEX FIRE EI 120' without water irrigation

Fire roller textile curtain without water irrigation to sectorize fires. Automatic barrier with classification up to EI₂-120 C1.

The canvas is manufactured of a 25/30 mm thick technical fabric, made of fiberglass reinforced with stainless steel and double-stitched with high-resistance steel thread on the outside, and of different intumescent materials and resistant fibres inside. The finishing on both sides is black.

Thanks to the system of transverse straps with lateral bearings guided by a rail, it provides the rigidity and flexibility of movement needed by the canvas to operate. At the lower part, it has a counterweight for correct tensioning and closure to the ground.

The upper receptacle and the feet of the structure are made of galvanized steel with hidden fastenings and can, optionally, have white lacquered finishing or another RAL colour. It is possible to hide both the feet and the receptacle between walls and to add a false ceiling. Hidden cross photocells curtain for maximum safety.



Sectional door SANDWICH

With sectional vertical opening, it is compensated by springs and easy manoeuvrability. Perfect closure, high thermal insulation, excellent tightness through joints around the perimeter. Made with insulated panels kind of sandwich, double-sided galvanized steel and painted with polyurethane foam filling. Guides and ironworks in galvanized steel or aluminium. Excellent performance against oxidation. Guides adapted to different types of lintel. It does not protrude outside and takes up little space inside. **Options:** windows, pedestrian door, special panels, guides and stainless steel ironworks.

Maximum dimensions: 8,500 x 7,500 mm. Other dimensions enquire.



Sectional door ECO DOCK (Loading dock)

Sectional doors with sandwich panel, specially designed for the openings in the loading docks. Manoeuvring system managed by a mixed panel, allowing to centralise the manoeuvres of the door and the dock leveller. This system avoids accidents between the door and the dock leveller.

This electrical panel also allows the centralized connection between traffic lights, safety chocks and inflatable shelter.

Maximum dimensions: 3,300 x 3,800 mm.



Sectional door ALU-SECC (Glazed aluminium)

Aesthetic and functional sectional door. Can be customized and has great transparency and luminosity. The panels are made of aluminium profiles that form frames that can be opaque or glazed. The standard glazing is in compact polycarbonate, other types of glazing can be used. The opaque panels are made with 14 mm aluminium sandwich panel. The sealing of glass and panels is achieved by rubber joints.

Maximum dimensions: 8,500 x 6,000 mm.



Sectional door ALU-SECC VISION

Sectional door especially suitable for places where it is necessary to see the interior or to make the most of the natural light. Glazed panels with 6 mm anti-scratch polycarbonate on both sides and with exclusive aluminium profiles.

Maximum dimensions: 5,000 x 5,000 mm.



Sectional door ALU-MIX

Glazed sectional doors with maximum transparency, design and functionality. They combine opaque sandwich panels with glazed panels. The standard glazing is in compact polycarbonate. Other types of glazing can be used, the panels are sandwich panel.

Maximum dimensions: 8,500 x 6,000 mm.



Sectional door FIBERSECC INOX 316

Ideal for corrosive and marine environments, it is made of polyester and fiberglass sandwich panels. Light, very resistant to impacts and easy to clean. Guides and ironworks in stainless steel. The springless weight compensation system ensures a longer service life with less maintenance. **Option:** one or two low panels with self-repairing anti-impact system, which gives the door greater resistance to blows thus avoiding frequent repairs.

Maximum dimensions: 5,500 x 6,000 mm.



Sectional door RIPENING SECC for ripening rooms

Sectional door RIPENING SECC for ripening rooms. Sectional doors belonging to a superior range to ensure good food processing with a tight and effective closure. It certifies the control of special factors in terms of temperature, humidity, cleaning or heat conditions and provides greater tightness to the gases, thanks to the high quality insulating materials with which it is manufactured and that provide an unbeatable guarantee for cooling and fruit ripening.

Finishing with white lacquered steel side and intermediate hinges of galvanized steel. It always incorporates a double acrylic window that works as an emergency exit.

Options:

- Manual or automatic operation.
- Sandwich model (with different lintel options)
- Stackable model without horizontal guides or springs.

Maximum dimensions: 5,500 x 7,000 mm



Sectional door MINERAL-SECC ROCK WOOL A1

Sectional door to improve the thermal and acoustic insulation between the outside and the inside where the door is located, thanks to the rock wool filling inside.

It is designed to be used in environments having high temperatures, between 60 and 100°C, for example paint booths, where panels with polyurethane are not appropriate, or places where polyurethane is not allowed. Thanks to its characteristics it can be used as a flame-arrester door. It is also ideal for insulating the loading points facing outside.

The panels are made up of two sheets of white galvanized steel or fibre fireproof sheet, filled inside with rock wool. It has fireproofed reinforcements throughout the entire panel, joined together with an aluminium male/female.

Maximum dimensions: 4,500 x 4,500 mm



Roller shutter MIRTherm IST (Insulated) Steel

Designed for a more general industrial use, Mirtherm is an insulating roller shutter door of high profit, robust and with a very quiet operation thanks to the materials used, that allow a smooth movement of the blade. Door made with sandwich blades insulated with polyurethane and without frequent wear components such as cables and springs, so it requires virtually no maintenance. Standard blades in galvanized steel available in various colours. Increased speed option with frequency inverter. Guide 105 and 135.

Maximum dimensions: 6,000 x 5,000 mm.



RAL 9002
White



RAL 9006
Grey



RAL 7016
Grey



RAL 5010
Blue



RAL 3000
Red



Roller shutter MIRTherm S

Intended for small and frequently used spaces, but especially for loading areas and logistic docks. Made by a set of aluminium slats filled with polyurethane foam and weaved together, which are rolled compactly into the upper coiling box. Both the slats and the motor have a reduced size providing significant lightness to the door and, in turn, more free space around it. It opens either by pressing or by maintained contact. It requires little maintenance. The standard finishing of the slats is white lacquered 9002 or grey 9006. Optionally it can include peepholes and photocell curtain.

Maximum sizes: 4,000 x 4,000 mm.



Roller shutter ALUMIR SF (Simple) Aluminium

Alumir SF is manufactured with a simple blade in aluminium extrusion, which provides lightness and functionality to the door, while offering minimal insulation. It is a roller shutter door durable and impact resistant and provides a good closure for limited spaces. Finishing in silver anodized aluminium or white lacquered (other colours available). Option of polycarbonate bands and frequency inverter. Guide 105 and 135. **Optional:** micro-perforated slat (**Alumir SA-MP**) or die-cut slat (**Alumir SF-T**).

Maximum dimensions: 5,000 x 5,000 mm



Roller shutter ALUMIR DF (Double) Aluminium

Alumir DF roller shutter doors for indoor or outdoor use made of double and reinforced aluminium extrusion blades, so that they offer a little more sealing than the Alumir SF and are perfect for cold areas. Reliable, efficient and safe enclosure. In addition, it has a modern design that allows peepholes to be included. Finishing in silver anodized aluminium or white lacquered (other colours available). Increased speed option with frequency inverter. Guide 105 and 135.

Maximum dimensions: 6,000 x 6,000 mm.



Roller shutter ALUMIR PS (Parkings) Aluminium

Roller shutter door intended for a semi-intensive use in passages having a lot of traffic, such as buildings with private garages or car parks. Depending on the size of the door, the motors can withstand 30 to 40 manoeuvres per hour. It is available with fast motorization and frequency inverter that avoids the blows by sudden braking and allows speed adjustment. Coiling box covering drawer compulsory for doors lower than 2500 mm height. Guides equipped with PVC profiles to improve sliding and to die down noises. Aluminium blades perforated or die-cut and lacquered in different colours or optionally anodized. It includes curtain of photocells. Guide 105.

Types of blade: 80mm double aluminium, 80mm simple microperforated, 100mm double aluminium, 100mm simple microperforated. **Maximum dimensions:** 5,600 x 3,300 mm.

ALUMINIUM ROLLER SHUTTERS



Roller shutter ALUMIR C80

Roller shutter doors having an elegant line of 80mm aluminium extrusion blades that offer high visibility thanks to the different options: die-cut (C80T), perforated (C80P) and microperforated (C80M). Ideal for commercial premises; the complete micro perforation of all its blades allows a complete view of the premises without sacrificing safety, which means that we enjoy an authentic showcase 24 hours a day. Also available with a blind finishing, double, ventilated and with two die-cut options with shafts of 100 x 35 mm and 225 x 35 mm (width x height), which can be combined with polycarbonate sheets to prevent the passage of air, dust, etc. Available in various colours lacquered finishing.

Maximum dimensions: 4,700 x 4,500 mm.



Roller shutter ALUMIR C100

Aluminium roller shutter door distinguished by its 100 mm extruded blade that provides greater safety without sacrificing maximum visibility of the interior. Suitable for shops and businesses with large accesses. It integrates a rubber system allowing silent opening and closing. The finishing can vary according to the needs of the customer, with different outputs of blades (blind finishing, ventilated, die-cut with shafts of 160 x 60 mm and 360 x 60 mm (width x height), as well as polycarbonate sheets to prevent passage air, dust, etc. Available in various colours lacquered or anodized finishing.

Maximum dimensions: 5,800 x 4,500 mm.



Roller shutter ALUMIR C78

The Alumir C78 insulated aluminium roller shutter model is made with curved extruded aluminium blades filled with polyurethane foam for better insulation. Especially indicated for private or community garages. Finishing available in white, silver or ivory.

Maximum dimensions: 4,000 x 3,500 mm.

STEEL ROLLER SHUTTERS



Roller shutter ROLLMIR 110

The bestselling door because of its quality / price! Thanks to its exclusive blind blade profile in galvanized steel, it offers maximum rigidity and safety. It can be combined with microperforated blades, transparent Vision blades or the door Rollmir Tubular. Manual or motorized operation. **Finishing:** galvanized. Option lacquered white, black 9005, grey 7016 or brown 8017 according to RAL chart. **Maximum dimensions:** 13.000 x 10.000 mm (width x height).

Roller shutter ROLLMIR 47

The solution for spaces having small accesses. **Maximum dimensions:** Maximum surface



Roller shutter ROLLMIR 110 MICRO

Especially suitable for shops at street level or shopping malls, it achieves better visibility of the show window and air circulation thanks to its galvanized steel microperforated blades, without losing the safety properties. It can be combined with blind blades and operates manually or with motor. **Finishing:** micro blade with 33% ventilation. **Maximum dimensions:** 7,000 x 12,000 mm.



Roller shutter ROLLMIR VISION

It favours the vision and the entrance of natural light to the interior by means of 100% transparent blades with anti-UV treatment and mounted in quincunce. Perfect to highlight shop windows both day and night. Robust blades to ensure optimum safety. It can be combined with blind blades. Manual or motorized operation. **Finishing** in galvanized steel. **Maximum dimensions:** 8,200 x 5,000 mm

MIRCOM

Doors for waste plants

Watertight gates specifically designed for composting tunnels, maturation or fermentation zones, wood dryers or, in general, for places where a tight and resistant enclosure is required. The opening and the movement are easily accomplished by means of a hydraulically driven lifting mechanism (manual or electric pump) hanging on rails by double wheels with bearings. It is a simple, practical and almost maintenance-free system that closes by the door's own weight. The lateral catches, in the form of an inclined plane, force the slat to approach the wall, compressing the side rubber joints against it, which prevent the exit of gases, odours and liquids.

The manufacturing materials are suitable for the working environments and resistant to oxidation and aggressive habitats:

Inner and outer face of galvanized sheet coated with Granite HDX of 55 microns.

- Panel insulation with injection polyurethane foam with a density of 40 Kgs/m³.

Sheet

- Sandwich panels of 60 mm. thickness.
- Inner and outer face of galvanized sheet coated with Granite HDX of 55 microns.
- Panel insulation with injection polyurethane foam with a density of 40 Kgs/m³
- Options: Finishing in stainless steel 304

Perimeter structure

- U-shaped aluminium profile specially designed for this door. White lacquered finishing.

Usual sizes: 5,000 x 5,000. To enquire for other sizes.



Waste treatment plant in Islas Canarias.



Composting plant in País Vasco.



Waste treatment plant in Costa Brava.



Composting plant in France.



Composting plant in Greece.



Composting plant in Portugal.



Waste plant in Bucarest.



Waste treatment plant in Madrid.



HIDRA NR Dock leveller for loading dock with folding lip

It is the perfect link bridge between the warehouse and the load vehicle with 450 mm folding lip system for better support on the truck. It has two cylinders to provide greater stability and internal reinforcements with IPN beam. Non-slip studded plate of 6/8 mm. Lip of studded plate of 13-15mm. Advanced hydraulic control unit to facilitate maintenance work. Maintenance free hinges. Oven polymerized polyester powder paint to improve wear resistance. **Options in stainless, hot-dipped or mixed steel.**

Loading capacity: 6Tn. Optional; 10 or 12 Tn

Hidra NR Basic model for economical and standard dimensions.

Hidra M reinforced model for special sizes.



TELESCO Dock leveller for loading dock with telescopic lip

Ideal for refrigerated facilities. Adjustable telescopic lip that ease the adjustment of the support depending on the vehicle and the load. Structure calculated for different load capacities. Platform with studded plate of 6/8 mm thick. Lower reinforcement with reticular structure of beams IPN.

Lip of studded plate of 13-15 mm thick. Compact hydraulic power plant with motor pump group and adjustable and retaining valves. Blockage electrovalve in case of emergency stop or voltage failure. Electronic manoeuvre with automatic closing system. **Loading capacity:** 6 Tn. Optional 10 Tn. Higher capacities, to enquire. **Options in stainless, hot-dipped or mixed steel.**

TELESCO ISOPERFECT

It allows the opening of the truck doors inside the dock to improve the tightness and avoid temperature losses.



TELESCO VAN Dock leveller for vans

It allows the loading and unloading from different types of vehicles: heavy trucks, delivery vans, etc. The selector switch installed in the control box enables the selection of the appropriate mode for the lip. For vans, the effective width of the lip is reduced to 1200 mm, the capacity of the leveller is 20 kN and the dead weight is limited to 2 kN. When used to load trucks, the lip width changes to 1950 mm and the ramp capacity is 60 kN. During the loading and unloading manoeuvre the leveller automatically adapts to different heights. Telesco Van is manufactured in steel with finishing painted blue RAL 5010 and is supplied together with a metal frame of fixing, making up a complete set that is installed in a single step. **Standard telescopic lip:** 6° fold. **Straight lip option:** no fold. It is used when the loading platform is level or below. **Short bevel:** 40 mm / **Long bevel:** 100 mm. Only on straight lips.



Outside assembling without civil work.



Inside assembling with civil work.

LOADING BRIDGE KA Vertical dock

Vertical hydraulic loading bridge that fills the gap between the vehicle and the warehouse, being possible to open the doors of the vehicle inside the building.

Its installation has a lower economic cost and involves less civil works, thus making easier the assembly and the maintenance tasks. Range of movement of more than 90° and allowed transverse incline ± 100 mm. The vertical resting position allows to close the dock door from the front. Ideal for refrigerated facilities.

Platform with non-slip steel studded plate and finishing of polyester epoxy resin in blue RAL 5010. Increased wear resistance. Option in hot-dipped galvanized steel. It includes safety and control systems for easy handling and risk-free functionality.

Loading capacity: 6 Tn.

DOORS

SPEED DOORS

FIRE RESISTANT
DOORS

SECTIONAL
DOORS

ROLLER SHUTTERS

ALUMINIUM
STEEL
ROLLER SHUTTERS
COMPOSTING
DOORS

LOADING BAYS

DOCK LEVELLERS

DOCKS SHELTERS
BUMPERS
AND POSTS

SECURITY
SYSTEMS

LIFTING TABLES

OTHER SOLUTIONS

TO LOAD
& UNLOAD



Dock levellers Hydra galvanised with hatch.



Dock levellers Hydra NR.



Dock levellers Telesco.



Dock levellers Hydra NR.



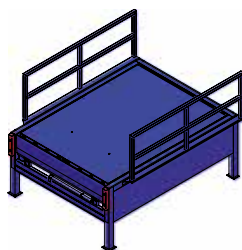
Dock levellers Telesco with door above.



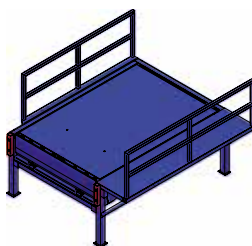
Dock levellers Telesco with door ahead.

BASE FRAMES (structure to support the dock levellers)

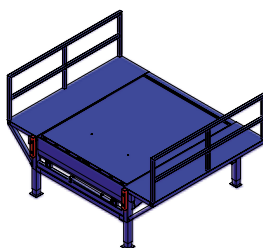
This structure allows the use of a ramp on the loading dock without needing civil works. **Options:** one or two side aisles; fixed or removable railings; access ladder; anticorrosive treatment; RAL colour 5010 (blue). Custom-built manufacturing.



B0 Model
without hatch
and with handrails
(optional handrails).



B1 Model
without hatch
and with handrails
(optional hatch).



B2 Model
without hatch
and with handrails
(optional hatch).



**BOX B2
AUTODOCK Model**
loading house.



**BOX B2
ISOPERFECT Model**



B2 base frame.



Box loading dock with Mirtherm IST roller shutters.



Box loading dock Autodock B2.



Dock shelter **AB Retractable**

The vehicle enters the shelter when it is placed on the dock leveller and then both, side and top flexible curtains, made with a canvas of polyester double-woven impregnated with black PVC, **obstruct the entry of air, water or gases**. Resistant to impacts and wear produced during the normal operation in the loading dock.

It is reinforced at the points where wind or movement can cause tears. The internal structure is galvanized steel (mechanical resistance) and the exterior finishing are aluminium (resistance to oxidation). The pre-assembly system at the factory and the anchoring system on site simplify set-up and maintenance.



Dock shelter **AB-ALU Retractable**

Shelter for loading dock by push contraction. Structure in set-up of anodized aluminium. Corner joining brackets in 6 mm galvanized sheet. Sealing joints hidden inside the side wall profile. Optionally, double lip sealing joints in the entire side wall contour. Drainage channel.

SIGNAL SHELTER OPTION:

Smart shelter system with LED lighting to make easier to place and manoeuvre the vehicles at the loading dock at night or with adverse weather conditions and poor visibility. Three available models of LEDS position: 1, 4 and 8.

Options: dock approaching System, guiding to centre the truck on the dock, interconnection with the door, ramp and dock chock, backlight of the facade in different colours, lighting inside the shelter, numbering of the dock with illuminated plate on the dock frame, interconnection with the dock management program, reports load / unload status.



Dock shelter **AB EASY**

Economic model manufactured with a front aluminium structure with rounded corners of composite material. Back structure in galvanized steel for correct anchoring into the wall. Curtain made with a polyester canvas. The side walls and the upper one retract when pushed, so if a truck hits the shelter head-on, this accompanies the movement of the truck.



Dock shelter **ASS Foamed and flexible**

Shelter with flexible sides for loading dock. No metal profiles, no arms or hinges. Sides of **flexible foam** lined with P.V.C. 100 mm thickness. Lateral curtains 600 mm wide. Fastening interior clamps on both sides. Self-adjusting system at the head absorbing the vertical elevations of tall vehicles. **ALMOST INDESTRUCTIBLE!** Specially designed for docks with heavy traffic and complicated accessibility.



Dock shelter **AC Foamed Fixed / Adjustable**

The essential complement in a loading dock having isothermal needs. The AC shelter prevents the entry of air, water, gases, dust, insects, etc., and maintains a good sealing between the door threshold and the rear of the vehicle loading or unloading. It provides high tightness. Through a motorized system, it adapts to the variable heights of the cargo vehicles. It is very resistant to moisture, abrasion and aging caused by solar radiation. It is essential that trucks enter guided by fixed wedges to avoid impacts and damages to the side panels.



Inflatable dock shelter AH ISO

Shelter for loading dock with rigid structure in anodized aluminium profiles. Support brackets with front protection stop. Sealing joints hidden inside the side wall profiles. Optionally, double lip sealing joints all around the side wall. Drainage channel. Replaceable sides. The head is available in different heights from 1,000mm to 1,900mm. Support for the safety chock.

SIGNAL SHELTER OPTION: Smart shelter system with LED lighting to make easier to manoeuvre the placement of the vehicles at the loading dock at night or with adverse weather conditions and poor visibility. Three available models of LEDS position: 1, 4 and 8.

Options:

- Dock approaching system
- Guiding to centre the truck on the dock
- Interconnection with the door, ramp and dock chock
- Backlight of the facade in different colours
- Lighting inside the shelter
- Numbering of the dock with illuminated plate on the dock frame
- Interconnection with the dock management program
- Reports load / unload status



AH ISO
Signal Shelter 1L



AH ISO
Signal Shelter 4L



AH ISO
Signal Shelter 8L



Inflatable dock shelter AH ECO

Same features as the ISO model without rigid side panels with curved bags for a better fitting to the truck.

Options:

- Cordura black or ivory depending on the construction site.
- Adjustable top head at different heights for vehicles such as vans.
- Flexible sides for complicated accessibility spaces.



Dock shelter for vans ACH **NEW**

The flexible dock shelter ACH is manufactured with an inflatable head to adapt to the variable heights of transport vehicles such as vans or delivery trucks. The vehicle can couple to the dock without creating problems and the loading and unloading of the merchandise can take place inside the facilities. This makes it ideal for loading docks of e-commerce logistics platforms or courier distribution centres. Its structure is in anodized aluminium profiles and incorporates hidden sealing joints and a new front lighting system around the entire contour of the shelter.

Options:

- It can include double lip sealing joints on the entire contour of the wall side.
- directions sign
- backlight next to the wall
- interior lighting to the loading door



Low inflatable dock shelter AH 4BAGS

The **AH 4BAGS** is a fourth sealing cushion at the base which achieves a complete sealing of the contour of the truck and provides great energy savings. Ideal for the Isoperfect Plus loading and unloading system.



Extendable dock shelters and Loading tunnels

The **extendable dock shelters** are frontal structures that cover the doors or facades that protrude outdoors. Suitable for loading points at ground level and with spaces allowing reduced manoeuvring only. Option of extendable and rotatory at 90° shelter model for loads parallel to the building. The **extendable loading tunnels** are intended to fill spaces between industrial units or cargo areas. They are flexible and, depending on each case, can be folded or fixed.

DOORS

SPEED DOORS

FIRE RESISTANT DOORS

SECTIONAL DOORS

ROLLER SHUTTERS

ALUMINIUM STEEL ROLLER SHUTTERS
COMPOSTING DOORS

LOADING BAYS

DOCK LEVELLERS

DOCKS SHELTERS
BUMPER AND POSTS

SECURITY SYSTEMS

LIFTING TABLES

OTHER SOLUTIONS

TO LOAD & UNLOAD

LOADING DOCK BUMPER

The dock bumpers prevent the collision of the truck against the dock leveller and maintain the necessary distance between the truck and the leveller, guaranteeing the correct operation of the dock leveller during the loading and unloading process.



TC 400 C (Rubber)
400x86x60 mm.



TM 400 P (Polyurethane)
405x80x76 mm.



TC 450 (Rubber)
450x250x105 mm.



TC 450 (Metal plate)
450x250x105 mm.



TM 460.250 (Metal)
460x250x80mm.



TM 500.150 (Metal)
510x150x120 mm.



TM 500.300 (Metal)
510x300x120 mm.



TPE 500.250
(Polyethylene)
500x250x115 mm.



TPE 750.250
(Polyethylene)
750x250x115 mm.

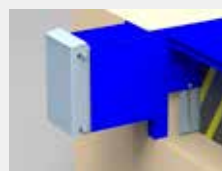


TP 500.200
(Polyethylene)
500x200x120 mm.



TP 500 P Isoperfect
(Retractable 200mm)
500-700x272x140 mm.

Safety area for the protection stops TC 450, TM 500.150 and TM 500.300. It guarantees the 0.50 m safety space for dock operators.



PROTECTION POSTS

Ideal protection from impacts against door guides, corners, drainage pipes, machinery etc.



TUBULAR DELTA
Steel
High: 800mm.
Base: 400x240mm.
(Yellow or zinc colour)



C-STUDDER
Steel
High: 800mm. Base: 400x300mm.
High: 500mm. Base: 400x300mm.
High: 400mm. Base: 400x300mm.
(Yellow or zinc colour)



TUBULAR
Steel
High: 800mm
Base: 200x200mm
Ø: 140mm



BELL
Steel
High: 430mm. Base: 300x300mm.
Ø: 160mm.
(Yellow or zinc colour)
Top cover with rotating and resonating system upon impact.



E-TRIANGULAR
Steel
High: 400mm
Base: 170x120mm
(Yellow and black colour)

WHEEL GUIDES FOR TRUCKS

Wheel truck guides allow the driver to conveniently place the truck against the dock, thus preventing shelters, docks or other facilities from being damaged by an incorrect approach of the truck.



GH-3000 Model (concrete)

Straight. Fastening by means of rods built into the pavement.

Length: 3,000 mm.

Weight: 450 Kg/u.

Not supplied already painted

*It is recommended to paint the guides in yellow and black.



G-25 Model

With off-centre angle. To embed or screw to the ground.

Length: 2,500 mm.

1. Steel galvanized to be screwed to the ground (STD).
2. Steel painted yellow to embed.
3. Steel painted yellow and black to embed.



G-15 Model

Straight. To embed or screw to the ground.

Length: 1,500 mm.

1. Steel galvanized to be screwed to the ground (STD).
2. Steel painted yellow to embed.
3. Steel painted yellow and black to embed.



SHOCKPROOF FLEXIBLE BOLLARD

Polyethylene

VRMIR Ø120 mm.

Height: 400/500/800 mm. Anchor rod: M-30

VRMIR Ø100 mm.

Height: 400 mm. Anchor rod: M-30

VRMIR Ø70 mm.

Height: 230 mm. Anchor rod: M-16



SHOCKPROOF FLEXIBLE GUIDE

Polyethylene

HRMIR Ø120 mm.

Height: 175 mm.

Length: 500/1000/1.500/2.000 mm. Anchor rod: M-20

HRMIR Ø100 mm.

Height: 155 mm.

Length: 500/1000/1.500/2.000 mm. Anchor rod: M-20

HRMIR Ø70 mm.

Height: 125 mm.

Length: 500/1000/1.500/2.000 mm. Anchor rod: M-16

Safety handrails option.

DOORS

SPEED DOORS

FIRE RESISTANT
DOORSSECTIONAL
DOORS

ROLLER SHUTTERS

ALUMINIUM
STEEL
ROLLER SHUTTERS
COMPOSTING
DOORSLOADING
BAYS

DOCK LEVELLERS

DOCKS SHELTERS
BUMPER
AND POSTSSECURITY
SYSTEMS

LIFTING TABLES

OTHER
SOLUTIONSTO LOAD
& UNLOAD

TRUCK WHEEL CHOCK



POLY CHOCK PREMIUM

Polyurethane manual chock with an alignment sensor that detects the vehicle's wheel and a control panel to connect it to the existing doors and ramps. The chock blocks the exit of the truck while a set of traffic lights and signalling device informs the operators both inside and outside. The connection between the sensor and the panel is made by cables protected by a flexible polyester pole that prevents them from crawling along the ground.

Poly chock Premium Includes:

- Polyurethane chock
- Sensor wheel detector
- A flexible polyester pole to prevent the cables from being dragged along the ground
- Fiberglass resistant bar and handle



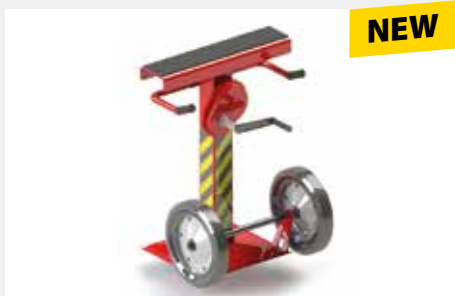
POLY CHOCK BASIC

Polyurethane chocks to block the truck when it is in the loading and unloading zone. It is made of non-corrosive material. Extremely tough making it indestructible. It is very economical and lightweight and includes an anti-theft security chain and a wall support.



STEELCHOCK

Wireless chock of metal wedge with alignment sensor that is placed manually under the wheel of the vehicle, and fits into the steel plate with longitudinal slots in the ground. It incorporates a set of signalling traffic lights and noise alarm to notify operators. It includes interconnection with the door, the dock leveller and the dock shelter. Finishing painted in yellow and red.



NEW

SAFETY BENCH Semitrailer support

The **safety bench avoids that** the semi-trailer without tractor unit **unbalances and tilts** forward when merchandise is gathered at its front part, preventing a serious accident from occurring at a loading dock.

BSR 10 TONS

Easy and safe operation with a hand crank that drives the self-locking trapezoidal spindle by means of a conical gear. Two speeds: load speed for lifting and lowering the load, and fast speed for movements without load. The upper rubber prevents slipping between the cargo vehicle and the bench. Handlebar and two wheels for an easy transport. Lifting range: from 970 mm to 1,440 mm.

BSR 24 TONS

Lateral pillars with telescopic tube, by means of a crank, to adjust the support height. The crank has two positions, one fast to save time when raising or lowering the bench without weight. And the slow position that can raise and lower the weight of the vehicle. Upper woods to prevent slipping between the trailer and the bench. It has four lower wheels and handles for transport. Lifting range: from 900 mm to 1,200 mm.





AEROTECH Ventilator

The aerodynamic design of the ventilator Aerotech allows new air to be boosted inside, creating a virtual tube that **recirculates air** throughout the whole length of the truck. Making the most of the recirculated air that it moves and, at the same time, consuming less energy. Economical equipment, resistant, easy to assemble and adjustable for different models and sizes of doors. **It occupies 75% less space** than conventional ventilators. Silent operation.



VERSALIGHT Mini

New model with LED lighting (standard) of smaller size and without ventilator. Provided with a multidirectional flexible tube of stainless steel. It is sturdy and easy to adjust to any position.

Consumption: 35W

Lighting power: 3,850LM



DOCKLIGHT Economical lamp for docks

Spotlight with articulated arm to illuminate the interior of trailers and trucks. It easily adjusts to any position and the orientation can be changed. Made with steel tube and a yellow painted finishing. It incorporates a safety device to avoid the door impacting against the arm, so that the arm is folded in half avoiding damage. LED lighting technology.

Consumption: 25W

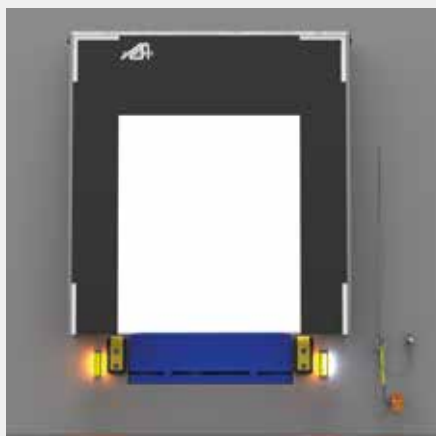
Lighting power: 2,640 LM



AERODOCK-LIGHT

Fan with built-in LED light bulb to provide more safety and comfort in the loading dock. It illuminates and exchanges the air inside the vehicle, facilitating the work of the operators and minimizing possible damage to the load or the vehicle. Ideal for manual loading with telescopic conveyor belts with personnel working inside the truck.

It is a design that includes two devices in one: the high flow fan and the powerful led light source. A **Duo version** with double focus is available. Easily adjusts to any position using an articulated arm and two handles. High hardness materials. Orange painted finish.



GUIDE LED Truck Guidance System

Improve the safety and efficacy of the loading dock!

It provides a useful reference point for the driver of the trailer, it makes easier the operation of placing the vehicle and avoids a misalignment because of adverse weather conditions or lack of experience.

It adapts easily to the characteristics of the loading dock and, depending on the model, can send out a light signal in different colours. Its LED technology allows energy savings, with minimal heat emission and, unlike older technologies, avoids replacing light bulbs regularly. It has been designed to withstand the weather and is easy to install on any loading dock.

The GUIDE LED 50 and GUIDE LED 220 systems have a position sensor to detect the truck and, therefore, in addition to guiding the truck, it also acts as a traffic light to indicate when the truck should stop.

Guide Led model

It consists of 2 orange LED guides, which serve as a useful reference points for the trailer driver as it facilitates the operation of parking at the loading dock.



Guide Led model 50

It consists of 2 orange LED guides, and incorporates a red LED guide activated by a detection sensor adjustable up to 500 mm from the dock. It allows interconnection with the door to block it if there is no truck at the loading point.



Guide Led model 220

It consists of 2 orange LED guides and a red LED guide activated by an adjustable position sensor and a white LED guide to indicate the status of the door (closed / not closed). The orange and red LEDs are controlled by a position sensor able to detect the truck at a distance of up to 2,200 mm from the loading dock. It allows interconnection with the door to block it if there is no truck at the loading point.

SAFETY BARRIER

Safety barriers fulfil the function of preventing possible falls, of operators, pallet trucks and forklifts, at the loading dock when the door is open and the truck is not yet in place. Given the incline between the dock and the ground, a physical barrier, as a security retaining, is the best solution. In addition, it also protects the rest of the equipment from possible impacts.

Suitable for any type of dock, the barrier is installed inside the loading point to protect the outer gap of the dock. It has a motorized vertical lifting and is made of steel with a yellow RAL lacquered finishing.





EXTRA-FLAT

The extra-flat lifting tables are the ideal solution for handling stations in production lines. They can be used as independent work tables or to repair or ventilate heavy elements that need to be transported on pallet trucks. As they are rather light, it is not necessary to build a pit in the ground and, consequently, they can be used in various areas.

In addition, they allow the workspace to be ergonomically comfortable for the operator. Since the power block for the extra-flat platform and the extra-flat U-shaped platform is preferably placed separately from the lifting platforms, all the flexibility that the equipment allows can be used.

Loading capacity: up to 2,000 kg. **Lifting stroke:** 800 mm.

Option in stainless steel for areas where greater hygiene is required. **It is easy to clean, disinfect, corrosion resistant and has a long service life.** Available in U-shaped, extra-flat and extra-flat MLU-FLAT and with folding at the ground level, with the option to incorporate a ramp.



SIMPLE SCISSOR

They are the basic model within the range of lifting platforms. They allow to solve problems related to unevenness in production areas.

Loading capacity: 10,000 kg.

Lifting stroke: de 500-2,000 mm.



DOUBLE SCISSOR

It has a limited stroke. In most cases, the maximum stroke is equivalent to the length of the platform divided by 1.5. Longer strokes are achieved if the lifting platform is equipped with multiple sets of vertical scissors. It can be used, for example, as a working platform, pallet loading, lift, means of transport for disable people or pallet stacker.

Loading capacity: up to 4,000 kg.

Lifting stroke: 800-4,300 mm.



LOADING DOCK

Used in docks for loading and unloading vehicles. The loading platform compensates the difference in level between the vehicle and the static loading dock. Mainly designed to be used outdoors under extremely difficult environmental conditions.

Loading capacity: up to 10,000 kg.

Lifting stroke: 1,600-2,000 mm.

Options: loading flap, side rails, TM500 stops with support feet, front protection curtain, protection fixed sides and access door.



ERGOMIR 360° Ergonomic and rotating manual loading table

Ergonomic rotating table to provide manual loading and unloading of pallets up to 40% faster, safer and easier. It uses a spring and shock absorber system to automatically adjust the height of pallet loads as boxes are added or removed.

Upper rotating platform. Does not require power or air supply. Includes forks for its transportation. Fixation to the ground is not required. **Loading capacity:** up to 2,040 kg



DOORS

SPEED DOORS

FIRE RESISTANT DOORS

SECTIONAL DOORS

ROLLER SHUTTERS

ALUMINIUM STEEL ROLLER SHUTTERS

COMPOSTING DOORS

LOADING BAYS

DOCK LEVELLERS

DOCKS SHELTERS BUMPERS AND POSTS

SECURITY SYSTEMS

LIFTING TABLES

OTHER SOLUTIONS

TO LOAD & UNLOAD



MOBILE YARD RAMP RM12

It allows the operations of loading and unloading of vehicles when it is not possible to build loading docks. Loading capacity: 6.000 kg. Side protections, vertical movement to adjust to the vehicle by means of hydraulic cylinder and pump. It can be combined with self-supporting platform.

Other load capacities: 10 tm., 12 tm., 15 tm.

Total length: 12,000 mm.

Width: 2,000 mm., 2,300 mm.

Manual and automatic version. Mobile and fixed version.

Options:

- Hot-dip galvanized
- Safety barrier



Permanent ramp with self-supporting bay.



Mobile ramp with PVC cover.



Angled ramp with self-supporting bay and Hidra dock leveller.



Mobile ramp for loading and unloading trains.



LEVELLERS FOR LOADING DOCK

They adapt the height of the dock to vans or delivery trucks without the need to perform any civil works, such as an inclined ramp. They lift the vans to the same height as the semi-trailers and, by means of a system of tracks with wheels, they move manually towards the sides according to the width of the transport vehicle.

The levellers are made of steel to guarantee their resistance and with an automatic locking system for greater safety.

Three levellers' models available:

Leveller NAC model

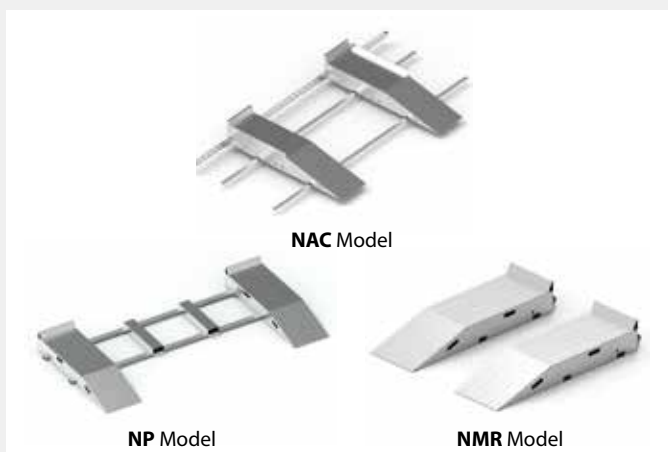
Leveller with system fixed to the logistic loading dock that moves and regulates in width through a track depending on the vehicle. It can have different lengths to lift the entire truck or van, or just the back.

Leveller NP model

Leveller with portable system with forklift. It is regulated in width according to the vehicle and only lifts the back of the truck or delivery van.

Leveller NMR model

Leveller with manual mobile system with wheels.



DOORS

SPEED DOORS

FIRE RESISTANT
DOORS

SECTIONAL
DOORS

ROLLER SHUTTERS

ALUMINIUM
STEEL
ROLLER SHUTTERS
COMPOSTING
DOORS

LOADING BAYS

DOCK LEVELLERS

DOCKS SHELTERS
BUMPERS
AND POSTS

SECURITY
SYSTEMS

LIFTING TABLES

OTHER SOLUTIONS

TO LOAD
& UNLOAD



MINI-RAMP Dock leveller

It does not require civil works to be installed. It consists of two folding lips and the weight compensation is with a gas cylinder. Platform of studded sheet with 5010 blue painted or galvanized steel finishing. For unevenness between 5% and 10%.

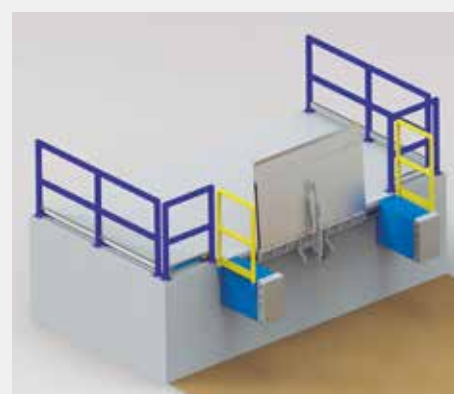
Capacity: 6 tons.



KA Loading bridge

Manual tilting loading bridge which can be moved with rail or optionally fixed. Made of non-slip studded steel sheet, painted and reinforced with profiles on the bottom side. Equipped with compensating springs to manoeuvre effortlessly. Safety locking system and side protections to avoid possible falls. No civil work is necessary for its installation. The guide for lateral movement is welded to the protection profile of the loading dock.

Capacity: 4 tons.



PPV and PPF Steel loading bridges

Steel folding manual loading bridge for external and internal docks. Two models available: the model PPF / PPFA remains fixed on the loading dock; The model PPV / PPVA moves laterally by rail. Includes an anti-fall locking system. Galvanized steel finishing.

Capacity: 6 tons.



M Steel loading bridge for containers

Mobile loading bridge for forklift access during loading and unloading of containers at ground level. The integrated sockets for the forks allow the loading bridge to be transported easily and quickly to the loading points. To secure the platform in the container, it has one chain binder on each side. Suitable for heavy duty forklifts.

Capacity: 6 tons.

DOORS

SPEED DOORS

FIRE RESISTANT
DOORS

SECTIONAL
DOORS

ROLLER SHUTTERS

ALUMINIUM
STEEL
ROLLER SHUTTERS

COMPOSTING
DOORS

LOADING BAYS

DOCK LEVELLERS

DOCKS SHELTERS
BUMBERS
AND POSTS

SECURITY
SYSTEMS

LIFTING TABLES

OTHER SOLUTIONS

TO LOAD
& UNLOAD



KVAN-ALU Aluminium loading bridges for vans

NEW

Loading bridge designed for loading and unloading light goods, it is non-slip and is manufactured with aluminium profile. Through a safety chain, it can be put to rest or in working position. The anti-fall is released with the foot and automatically secures the bridge in an upright position. **Capacity:** 300 kg. **Option:** 700 kg.



KVAN Fiberglass loading bridges

NEW

Fiberglass folding cargo loading bridge designed for loading and unloading vans. Equipped with safety chain to avoid possible falls in resting mode.

Capacity: 1,000 kg. **Dimensions:** 1,250 / 850 mm x 790 mm



PFV Model



PFV / PFB

Fiberglass loading bridges coated with polyester

Flt is made entirely of fiberglass and polyester composite. It is lightweight and has an extraordinary mechanical resistance to moisture and aggressive chemicals. In the lower face it has stroke stops in galvanized steel to limit sliding between the supports. Non-slip surface

Finishing: protective coating polyester Gel-Coat for aggressive exterior conditions. In green, blue or orange colour. Fiberglass loading bridge model PFB (with side railing). **Capacity:** 400 kg.

Available **PFB-V** model with a guide which allows the lateral movement.

Fiberglass loading bridge **PFB**
(with side handrail)



SKBS / SKBV Aluminium loading bridges

Folding and movable aluminium loading bridge to overcome medium slopes of up to 215 mm. Very slight lateral movement inside a steel rail-guide. When not in use, its position is vertical, secured with anti-fall mechanism. SKBV guide in bichrome steel.

Capacity: 4 tons.

For further information, please consult our detailed product catalogues:



GENERAL CATALOGUE



LOADING BAY
EQUIPMENT



HIGH SPEED DOORS



SECTIONAL DOORS



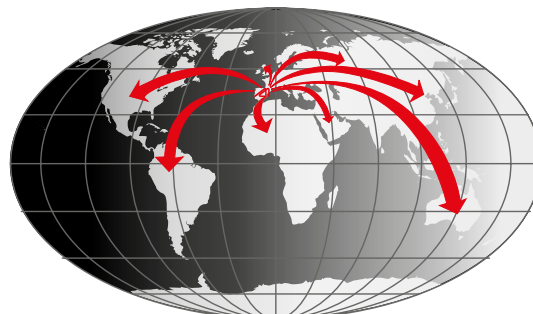
ROLLER SHUTTER
DOORS



FIRE RESISTANT
DOORS



We are present in more than 50 countries
EUROPE, AFRICA, LATIN AMERICA, MIDDLE EAST, ASIA



BARCELONA (Spain)
Tel.: (+34) 972 640 620
Fax: (+34) 972 642 451

info@angelmir.com
www.angelmir.com



[angelmirporbisa](https://www.facebook.com/angelmirporbisa)



[@angelmirporbisa](https://twitter.com/angelmirporbisa)



[angelmirporbisa](https://www.linkedin.com/company/angelmirporbisa)



[angelmirporbisa](https://www.youtube.com/channel/UC...)



[angelmirporbisa](https://www.pinterest.com/angelmirporbisa)

Distributor: